

# *Blue Danube*

*An elegant hood and scarf combination. The scarf can be knitted as a separate item. This pattern features a double-sided cable that lends structure and shaping to the hood.*



*by Kiiwi yarns Knits/Wei S. Leong*

## **You need:**

2 x 100g hanks (380m/415yd) Flagstaff Alpacas 8 ply multi-dyed 100% alpaca (or any DK weight 100% alpaca)  
(this quantity is for both the scarf and the hood)

4.5mm needles

Cable needle

## **Tension**

Scarf: 26 stitches x 22 rows in main pattern on 4.5mm needles (not essential that it's exact).

Hood: 20 stitches x 27 rows on 4.5mm needles in stocking stitch.

## **Knitted measurements:**

One size fits all. Comfortably fits up to 58cm (23") head circumference.

Finished scarf measures approx 140cm (55") long x 10cm (4") wide.

Finished hood measures 36cm (14") tall from top of hood to the bottom long edge of scarf. Hood is 25cm (10") wide (when folded flat, not including scarf).

### **Abbreviations**

4/4RC – slip 4 stitches onto CN and hold in back, [k1, p1] 2 times, [k1, p1] 2 times from CN.

4/4LC – slip 4 stitches onto CN and hold in front, [k1, p1] 2 times, [k1, p1] 2 times from CN.

### **Instructions:**

#### **Cable strap:**

First knit the reversible cable strap that runs between the hood and the scarf. (At this point, I prefer to use two DPNs because the shorter needles are easier to manipulate):

Cast on 18 stitches. (Note: this cable is worked in K1, P1 rib with one garter stitch on each side of the cable for later stitching ease)

Row 1: (RS) K1, 4/4LC, [k1, p1] 4 times, K1.

Rows 2, 4, 6 and 8 (all WS rows): K1, \*K1, p1; rep from \* to last stitch, K1.

Row 3 and 7: K1, \*K1, P1; rep from \* to last stitch, K1.

Row 5: K1, [K1, P1] 4 times, 4/4RC, K1.

Repeat rows 1 – 8 for pattern until cable strap measures 46cm (18”) give or take a couple of rows to end on Row 1 of the cable repeat. Bind off loosely in pattern.

#### **Hood:**

Pick up 100 stitches from one of the long edges of the reversible cable strap. First row (WS), Knit (this forms a one-row purl ridge on the RS). Second row (RS) Knit. Next row and all other rows, knit in stocking stitch (knit the RS, purl the WS) until the hood measures 22cm (8.5”). Ending on a RS row, slip 50 stitches on to a second needle, fold the hood in half right side facing, and join the edges using a three-needle bind-off.

Now turn the work so that the right side is facing you. Pick up 98 stitches from the face edge of the hood, including from the edges of the reversible cable. [K1, P1] rib for 4 rows, cast off loosely in rib.

Weave in ends and block if desired.

**Scarf:** (follow Andy’s scarf instructions). It’s a good idea to block the scarf before you attach it to the hood.

Attach scarf to hood: Fold the scarf in half lengthways. Match it to the middle of the back of hood. Using the remaining garter stitch edge of the reversible cable, mattress stitch the hood to the scarf by starting at the back and work outwards on one side, and then stitch the other side of the hood and scarf to match.

If you want the edging to your hood and scarf to be a little ‘fancier’, try a crochet edging as suggested by one of my lovely test-knitters, Karen: Pick up two strands of the outer most stitch. Sc,dc,sc, into same stitch (UK dc,trc,dc), slst into next stitch and repeat all the way around (you may need more yarn for this). Weave in loose ends. You’re done!

Acknowledgement: With many thanks for the inspiration provided by the wonderful cable patterns from Melissa Leapman and Andrea Pomerantz.

# Andy scarf

Featuring a simple lace/cable design



*by Kiyarns Knits/Wei S. Leong*

## **You need:**

4.5mm needles

## **Abbreviations**

M1L – pick up yarn between the stitches and knit into the back of the loop

M1R – pick up yarn between the stitches and knit into the front of the loop

SSK – slip two stitches to left needle as to knit, then knit both stitches together through the back loop

K2tog – knit two stitches together

YO – yarn over

SK2P – slip one, knit 2tog, pass slipped stitch over

SP2P – slip one purlwise, purl 2tog, pass slipped stitch over

C8B – slip 4 stitches to CN, hold in back, k4, k4 from CN

**Instructions:**

**Front point**

1. Cast on 11 stitches
2. K4, SK2P, K4 (9 stitches)
3. Knit all stitches
4. K3, SK2P, K3 (7 stitches)
5. K3, P1, K3
6. K2, YO, SK2P, YO, K2 (7 stitches)
7. K2, P3, K2
8. K2, YO, K1, M1R, K1, MIL, K1, YO, K2 (11 stitches)
9. K2, P7, K2
10. K2, YO, K1, M1R, K5, M1L, K1, YO, K2 (15 stitches)
11. K2, P11, K2
12. K2, YO, K11, YO, K2 (17 sts)
13. K2, P13, K2
14. K2, YO, K13, YO, K2 (19 sts)
15. K2, P15, K2

Continue pattern as set, YO after the first K2 and before the final K2 until you have a total of **25 stitches**, ending with on a RS row. On each WS row, K2, purl to last two stitches, K2.

Next row (WS): K2, P21, K2

NR (RS): K2, YO, K2tog, K9, M1L, K8, SSK, YO, K2 (26 sts)

NR: K2, P22, K2

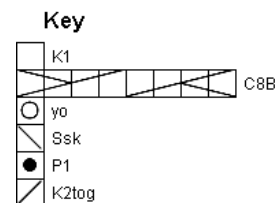
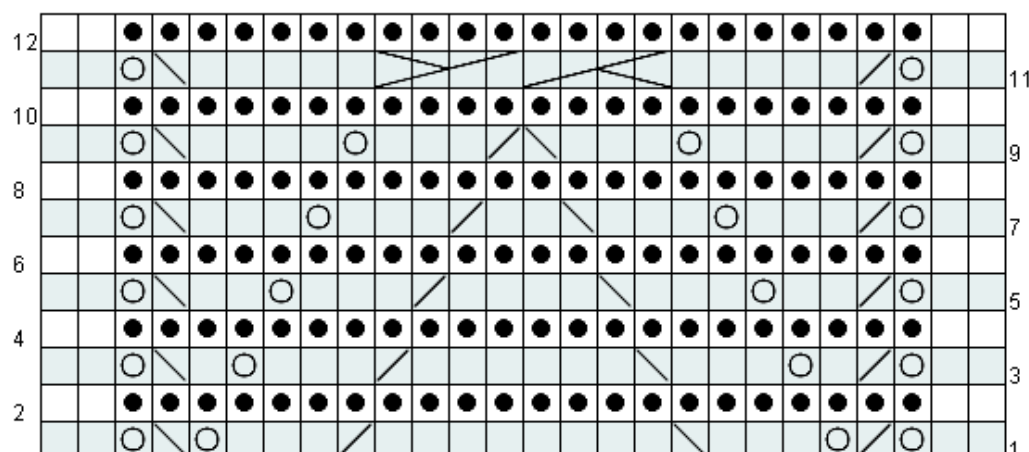
Now follow Main Section chart overleaf or if written instructions are better for you, as below:

**Written instructions for main section:**

1. K2, YO, K2tog, YO, K3, SSK, K8, K2tog, K3, YO, SSK, YO, K2
2. K2, P22, K2
3. K2, YO, K2tog, K1, YO, K3, SSK, K6, K2tog, k3, YO, K1, SSK, YO, K2
4. K2, P22, K2
5. K2, YO, K2tog, K2, YO, K3, SSK, K4, K2tog, K3, YO, K2, SSK, YO, K2
6. K2, P22, K2
7. K2, YO, K2tog, K3, YO, K3, SSK, K2, K2tog, K3, YO, K3, SSK, YO, K2
8. K2, P22, K2
9. K2, YO, K2tog, K4, YO, K3, SSK, K2tog, K3, YO, K4, SSK, YO, K2
10. K2, P22, K2
11. K2, YO, K2tog, K5, C8B, K5, SSK, YO, K2
12. K2, P22, K2

**Main section chart:**

**Andy scarf**



**For both chart and written instructions:** Repeat these 12 rows until there are 23 repeats. For a longer or shorter scarf, knit more or less repeats of pattern (scarf should be about 130cm at this point), but you may wish to “try it for size” at this stage to make sure it is the length you want. When appraising it for length to suit you, note that the scarf will shorten by approx 10 – 15cm at each end once attached to the hood.

Now begin end:

**End point**

1. (RS) K2, YO, K2tog, K8, K2tog, K8, SSK, YO, K2 (25 stitches)
2. (WS) K2, P21, K2
3. \*K2, YO, K2tog, SSK, knit to last 6 stitches, SSK, K2tog, YO, K2. **Next row**, K2, purl to last two stitches, K2\* Repeat \* to \* until **15 stitches** remain, ending on a WS.
4. (RS) K2, YO, K2tog, SK2P, K1, K3tog, SSK, YO, K2 (11 stitches)
5. (WS) K2, P2tog, SP2P, P2tog, K2 (7 stitches)
6. (RS) K1, P2tog, p1, p2tog, K1 (5 sts)
7. (WS) K5
8. (RS) K1, SK2P, K1. (3 sts)
9. (WS) K3tog. Draw yarn through remaining loop. Break yarn.

Weave in ends. Block by rinsing in lukewarm water with a little wool wash, lay flat to dry. There is no need to pin the edges unless you want the eyelets defined. Just pat the scarf into shape.

Acknowledgment: With many thanks to Jacquie from <http://Jacquie.typepad.com> for her free charting software.